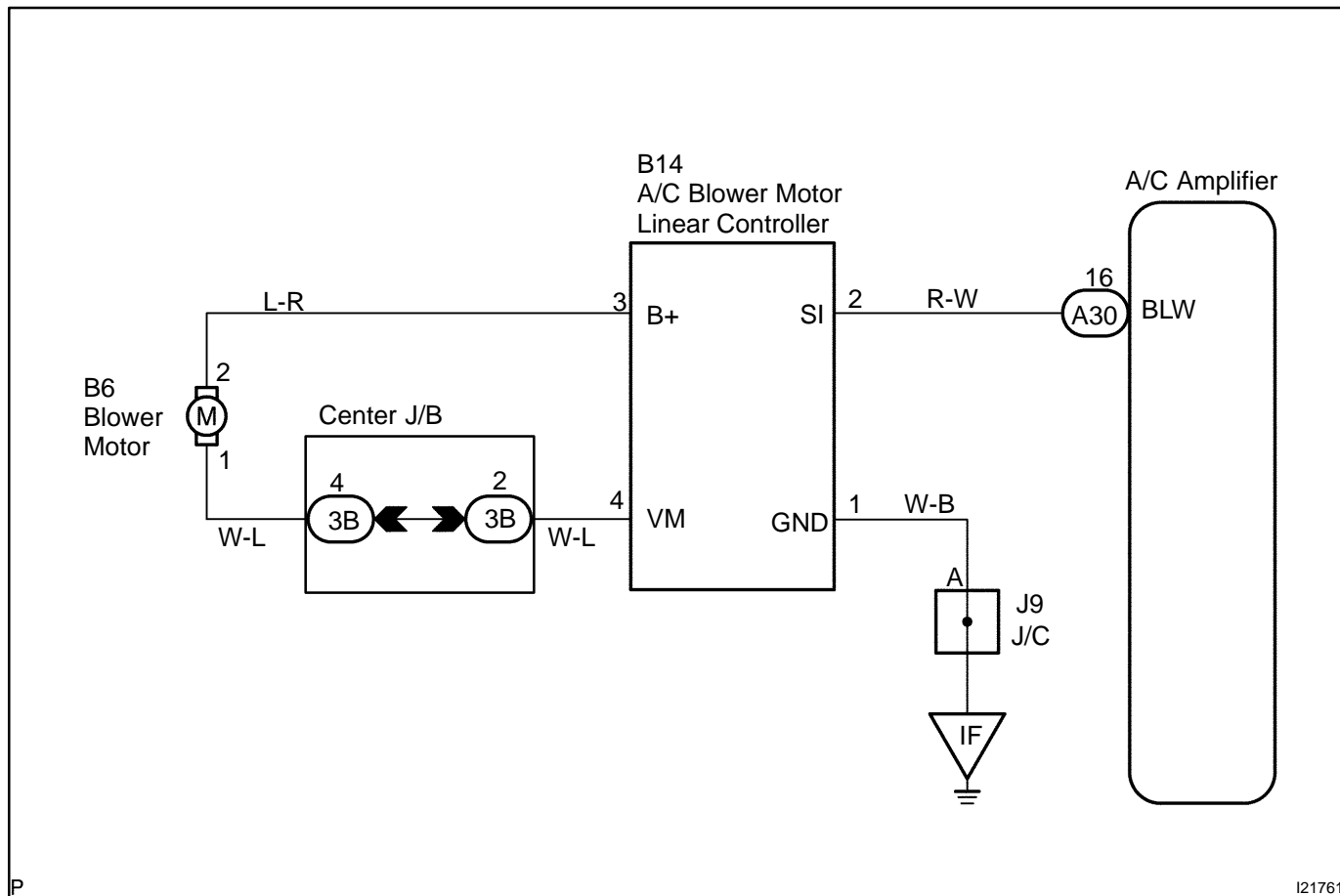


Blower Motor Circuit

CIRCUIT DESCRIPTION

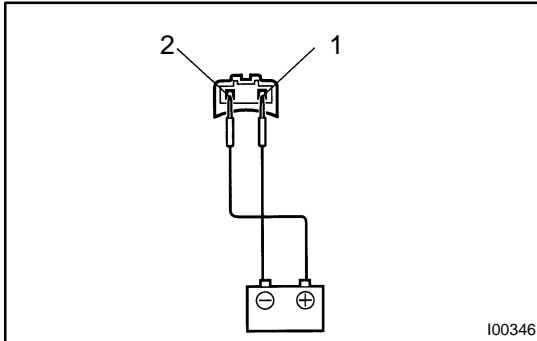
This is the power source for the blower motor.

WIRING DIAGRAM



INSPECTION PROCEDURE

1 Check blower motor.

**PREPARATION:**

Remove blower motor (See page [AC-66](#)).

CHECK:

Connect positive (+) lead connected to terminal 2 of blower motor connector, negative (-) lead to terminal 1.

OK:

Blower motor operates smoothly.

NG

Replace blower motor.

OK

2 Check harness and connector between battery and blower motor, blower motor and body ground (See page [IN-28](#)).

NG

Repair or replace harness or connector.

OK

Proceed to next circuit inspection shown on problem symptoms table (See page [DI-586](#)).